



# THE HAWTHORNS PRIMARY SCHOOL



ASPIRATIONAL QUALITY: **KINDNESS**  
 EMOTION OF THE WEEK: **Excited**  
 THEME : **Kindness**  
 AIM: **Consider the importance of being kind and the difference that kindness can make to people's lives.**



With the busy pace of life these days and the demands on our time it is easy to miss pieces of information and news of what's happening in the school.

The weekly bulletin is the school's regular form of communication and a good way to keep up-to-date with all that goes on at school. It is emailed out to you as well as being available on the school website and only takes a few minutes to read.

## MESSAGE TO PARENTS FROM THE HEAD TEACHER

Welcome back to all our existing families and all the new families who have joined The Hawthorns. I hope that you have all had a restful and enjoyable summer holiday. The children seem to be fully recharged and very pleased to be back to school. They have settled back in very well and impressed their teachers with their eagerness and effort. The staff have worked hard over the summer to make their classrooms and the school look tidy, clean and attractive. There is a real buzz of excitement around the school this week, which is just wonderful.

Years 5 and 6 have really benefited from our newly installed air conditioning (and heating) units in all their classrooms. The rest of the school have been very envious of them during this hot week.

I hope that most of you will be able to attend our 'Meet the Teacher' presentations next week, please refer to the date and time of your year group meeting on the next page. The teachers will be sharing some useful information with you and will give you the opportunity to ask any questions. We will of course ensure we share the presentations with you, if you are unable to attend the meetings.

We are all looking forward to another successful and exciting year.

Best wishes

Ms Razeghi

# Meet the TEACHER

Don't forget the Meet the Teacher afternoons next week!

If you are unable to make it, the powerpoints will be available after the meetings.

# School CLUBS

Clubs will begin week commencing 11th September. If you have not yet booked your child/children onto a club, please contact the school office.



# IMPORTANT DATES

## SEPTEMBER

|                |                                 |
|----------------|---------------------------------|
| Monday 11th    | Clubs start                     |
| Monday 11th    | Y6 Meet the Teacher at 3.45pm   |
| Tuesday 12th   | Y1 Meet the Teacher at 3.45pm   |
| Tuesday 12th   | Y2 Meet the Teacher at 4.30pm   |
| Wednesday 13th | EYFS Meet the Teacher at 3.45pm |
| Wednesday 13th | Y3 Meet the Teacher at 4.30pm   |
| Thursday 14th  | Y4 Meet the Teacher at 3.45pm   |
| Thursday 14th  | Y5 Meet the Teacher at 4.30pm   |

## OCTOBER

|                            |  |
|----------------------------|--|
| Thursday 5th               | Census Day                             |
| Friday 13th                | PTA School Discos                      |
| Monday 16th                | Y3 Butser Farm Trip                    |
| Tuesday 17th               | PTA AGM (wine and cheese night TBC)    |
| Wednesday 18th             | Parents Evening 4pm - 7pm Face-to-face |
| Thursday 19th              | Parents Evening 4pm - 7pm Virtual      |
| Friday 20th                | INSET DAY                              |
| Monday 23rd to Friday 27th | OCTOBER HALF TERM                      |
| Monday 30th                | Return to School                       |

*(Please click here to refer to the school website for our full Academic Term dates)*

# REMINDERS



## TURNING CIRCLE & PARKING

As we start the new term we would ask all parents to be considerate when parking near the school and to respect the access areas and property of local residents.

No parking is allowed on the ZIG-ZAG area or in front of the Emergency access gates. Please also remember that traffic using the school's 'turning circle' should keep flowing at all times with **no stopping** to drop off/pick up children. For the safety of everyone on site, your support is most appreciated.

The Turning Circle is provided to enable you to safely turn around without having to make a three-point turn in Northway or other local roads.

Three point turns, **especially on Northway**, are an incredibly dangerous manoeuvre, putting pedestrians at risk and we hope you will all take this message on board.

Thank you.



# Arbor

Please update Arbor with any changes to contact details, including details of those who collect your child/children from school on a regular basis.



If your child is going home with someone else that day, PLEASE can you let the office know, in writing, before 11.00am. Thank you



## Making Appointments

If your child is required to attend an appointment inside school hours, please can we ask you email the office a copy of the appointment confirmation in order for us to authorise the leave.

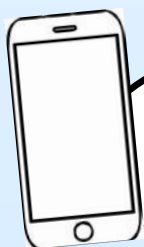


Please be aware that dogs are not allowed in the Front or Back playgrounds.

(Puppies in arms are excluded from this, provided they are not causing distress to anyone)

Also, please be mindful when standing at the gates that some children & adults are nervous around dogs, please keep them on a tight leash away from everyone.

Thank you.



All children bringing a mobile phone to school should hand in to the school office at the start of the day and collect again at the end.



Please can we remind all parents and carers that we are a NUT FREE SCHOOL.  
We would be grateful if you could avoid placing any nut products in packed lunches.

## MEDICATION CHANGE

If there has been any changes to your child/children's medication, please can you update the office as soon as possible to ensure our records are up to date. Thank you



We are extremely lucky to have a very active and successful PTA Committee at The Hawthorns School  
Please check this space each week for news and updates of upcoming events and fundraising opportunities.

[PTA@hawthorns.wokingham.sch.uk](mailto:PTA@hawthorns.wokingham.sch.uk)



To report absences, please email [absence@hawthorns.wokingham.sch.uk](mailto:absence@hawthorns.wokingham.sch.uk)

All other enquiries, please email [office@hawthorns.wokingham.sch.uk](mailto:office@hawthorns.wokingham.sch.uk)

<http://www.hawthorns.wokingham.sch.uk/website/home>